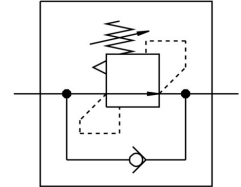


Differential pressure regulator LRL-1/2-NPT-QS-1/2-U

Part number: 190915

FESTO



Data sheet

Feature	Value
Type code	LRL
Controller function	Differential pressure constant
Pneumatic connection 1	1/2 NPT
Pneumatic connection 2	QS-1/2
Type of mounting	Screw-in
Inlet pressure 1	0 bar ... 9 bar
Ambient temperature	0 °C ... 60 °C
Housing material	PBT-reinforced
Operating medium	Compressed air as per ISO 8573-1:2010 [7:-:-]
Mounting position	Any
Symbol	00991535
Information on operating and pilot media	Operation with oil lubrication possible (required for further use)
Product weight	105 g
Material of screwed trunnion	Brass
Note on materials	RoHS-compliant